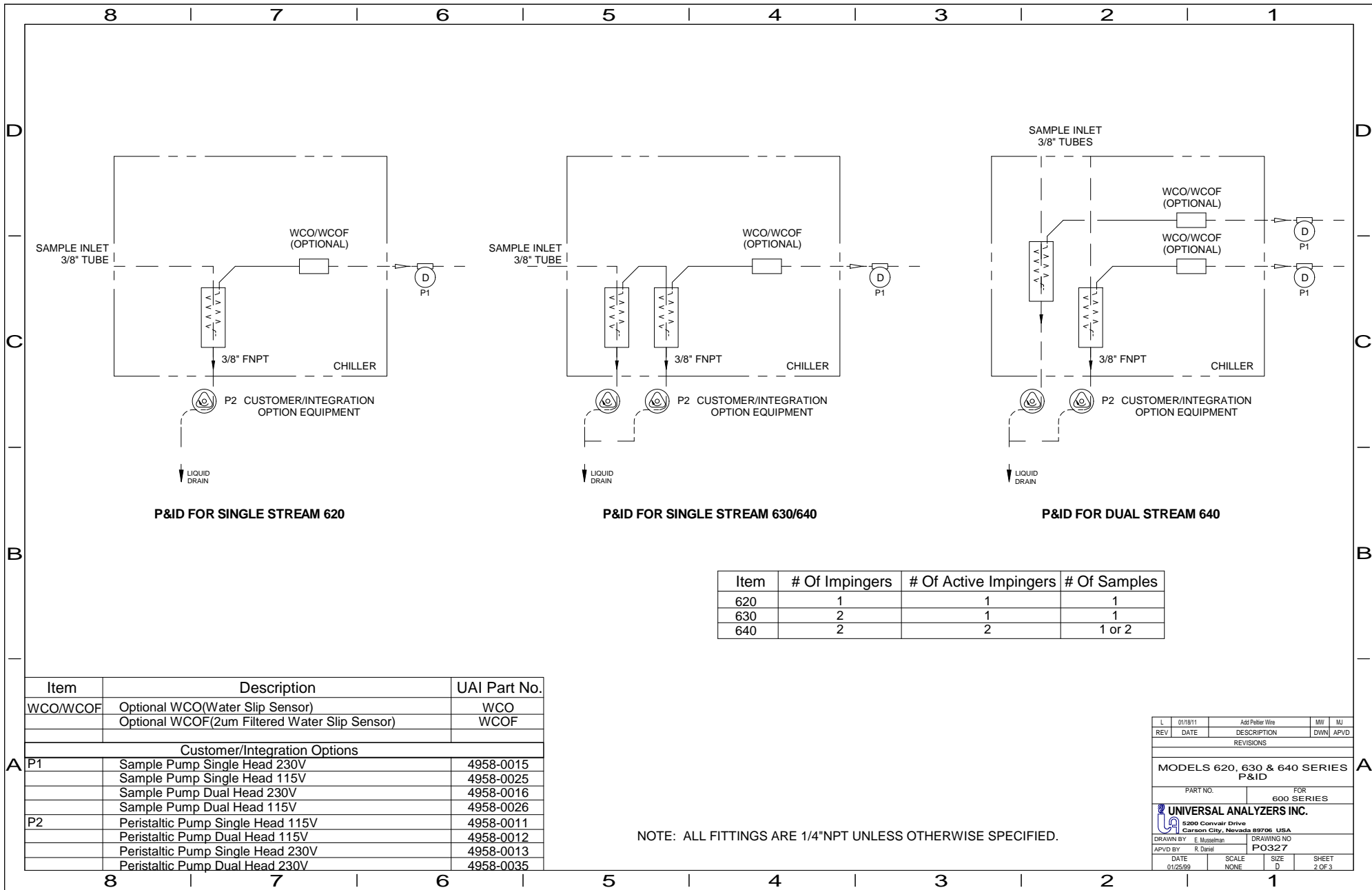


NOTE: SEE PAGE 3 FOR TERMINAL / CONTROLLER CARD CONNECTIONS LAYOUT.

L	01/18/11	Add Peltier Wiring	MW	MW
REV	DATE	DESCRIPTION	DWN	APVD
REVISIONS				
MODELS 620, 630 & 640 SERIES LAYOUT AND MOUNTING DIMENSIONS				
PART NO.		FOR 600 SERIES		
UNIVERSAL ANALYZERS INC.				
5200 Convalir Drive Carson City, Nevada 89706 USA				
DRAWN BY: E. Musselman		DRAWING NO: PO327		
APVD BY: R. Darrell		DATE: 01/25/99		
SCALE	NONE	SIZE	D	SHEET 1 OF 3



P&ID FOR SINGLE STREAM 620

P&ID FOR SINGLE STREAM 630/640

P&ID FOR DUAL STREAM 640

Item	# Of Impingers	# Of Active Impingers	# Of Samples
620	1	1	1
630	2	1	1
640	2	2	1 or 2

Item	Description	UAI Part No.
WCO/WCOF	Optional WCO(Water Slip Sensor)	WCO
	Optional WCOF(2um Filtered Water Slip Sensor)	WCOF
Customer/Integration Options		
P1	Sample Pump Single Head 230V	4958-0015
	Sample Pump Single Head 115V	4958-0025
	Sample Pump Dual Head 230V	4958-0016
	Sample Pump Dual Head 115V	4958-0026
P2	Peristaltic Pump Single Head 115V	4958-0011
	Peristaltic Pump Dual Head 115V	4958-0012
	Peristaltic Pump Single Head 230V	4958-0013
	Peristaltic Pump Dual Head 230V	4958-0035

NOTE: ALL FITTINGS ARE 1/4" NPT UNLESS OTHERWISE SPECIFIED.

L	01/18/11	Add Feltex Wire	MW	MJ
REV	DATE	DESCRIPTION	DWN	APVD
REVISIONS				
MODELS 620, 630 & 640 SERIES P&ID				
PART NO.		FOR 600 SERIES		
UNIVERSAL ANALYZERS INC.				
5200 Convalr Drive Carson City, Nevada 89706 USA				
DRAWN BY: E. Musselman		DRAWING NO: P-0327		
APVD BY: R. Daniel	DATE: 01/25/99	SCALE: NONE	SIZE: D	SHEET: 2 OF 3

CONDUIT AND WIRING NOTES

1. ELECTRICAL AREA CLASSIFICATION: INSIDE - GENERAL PURPOSE SYSTEM IS CONFIGURED AT THE FACTORY FOR REQUIRED VOLTAGE. CONTACT FACTORY FOR VOLTAGE CHANGE REQUIREMENTS

2. POWER PLUG POLARITY -  - +

3. DC CONTROL WIRING SHALL BE INDIVIDUAL CONDUCTORS OF STRANDED TINNED COPPER WITH 300V, TYPE TFE INSULATION. MINIMUM WIRE SIZE SHALL BE 18 AWG.

COLOR CODE SHALL BE AS FOLLOWS: + RED
- BLUE

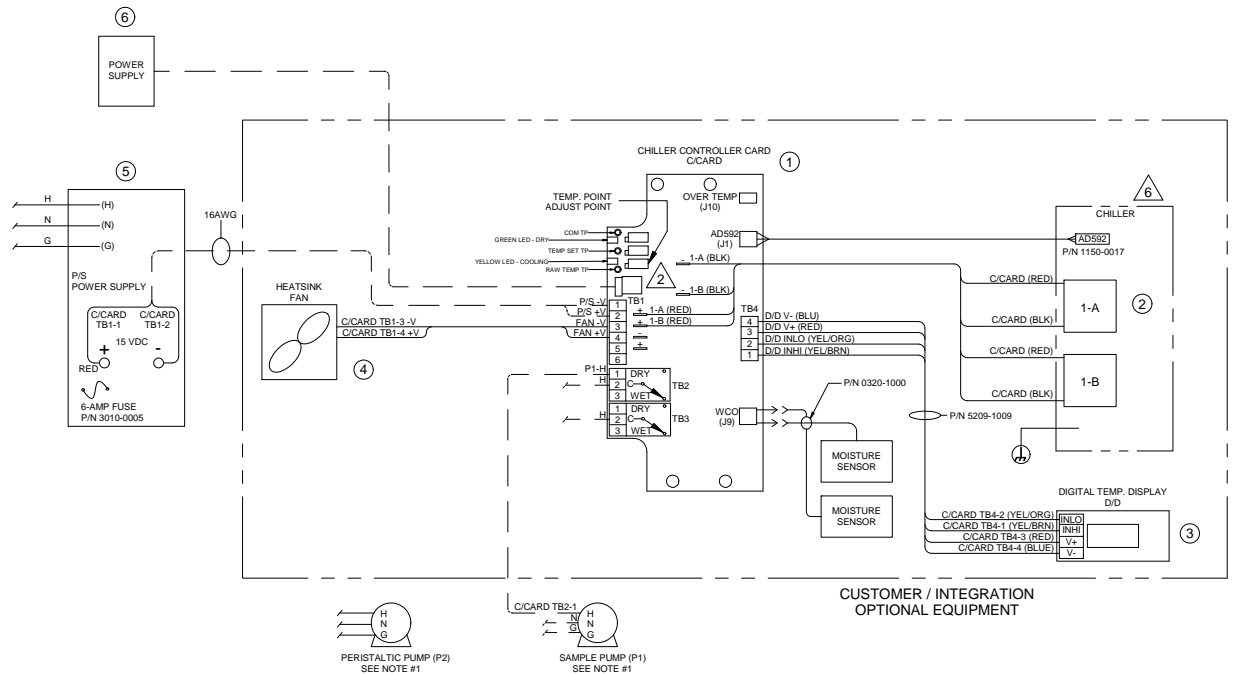
4. DC SIGNAL WIRING SHALL BE INDIVIDUAL CONDUCTORS OF STRANDED TINNED COPPER WITH 300V, TYPE TFE INSULATION. MINIMUM WIRE SIZE SHALL BE 18 AWG.

COLOR CODE SHALL BE AS FOLLOWS: COMMON - YELLOW
COMMON - YELLOW

5. LAST DIGIT OF MODEL # SPECIFIES DC SUPPLY REQUIREMENT.
2 = 12VDC
4 = 24VDC

6. PELTIERS ARE CONNECTED IN SERIES FOR 624,634,AND 644 MODELS.

PELTIER WIRIN	
6x2 (12Vdc)	
PELTIER 1 (+) - J6 (-) - J3	PELTIER 2 (642) (+) - J7 (-) - J2
6x4 (24Vdc)	
PELTIER 1 (+) - J4 (-) - J3	PELTIER 2 (+) - J6 (-) - J5



Number	Qty	Description	Part No.	Model
1	1	Controller Card 12VDC	3600-0036	622/632/642
	1	Controller Card 24VDC	3600-0035	624/634/644
2	2	Peltier Element 15V 8.5A	3016-0001	622/632
	2	Peltier Element 15V 8.5A	3016-0001	642
	2	Peltier Element 15V 3.9A	3016-0003	624/634
	2	Peltier Element	3016-0001	644
3	1	Display Card	3021-1000	All
4	1	Fan 12VDC	4800-0002	622/632/642
	1	Fan 24VDC	4800-0008	624/634/644
Customer / Integration Options				
5	1	Power Supply 12VDC 75W	5400-0027	622/632/642
	1	Power Supply 24VDC 150W	5400-0007	624/634/644
6	1	DC Power Supply 2.1mm Plug		All

L	01/18/11	Add Peltier Wiring	MW	MJ
REV	DATE	DESCRIPTION	DWN	APVD
REVISIONS				
MODELS 600 SERIES WIRING SCHEMATIC				
PART NO.		FOR NOT ISSUED		
UNIVERSAL ANALYZERS INC.				
5200 Convoir Drive Carson City, Nevada 89706 USA				
DRAWN BY: E. Musselman		DRAWING NO: P-0327		
APVD BY: R. Daniel				
DATE	SCALE	SIZE	SHEET	
01/25/99	NONE	D	3 OF 3	