

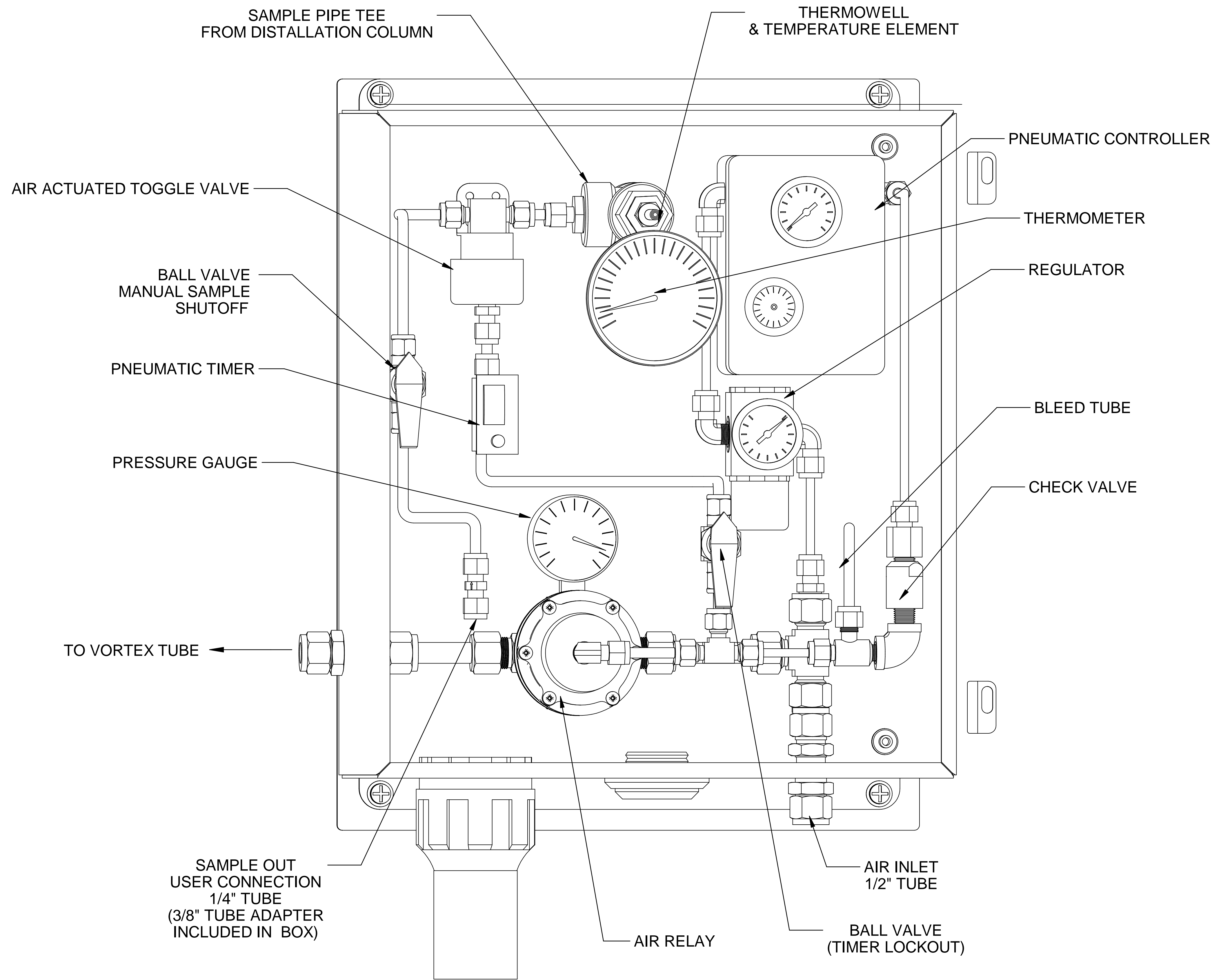




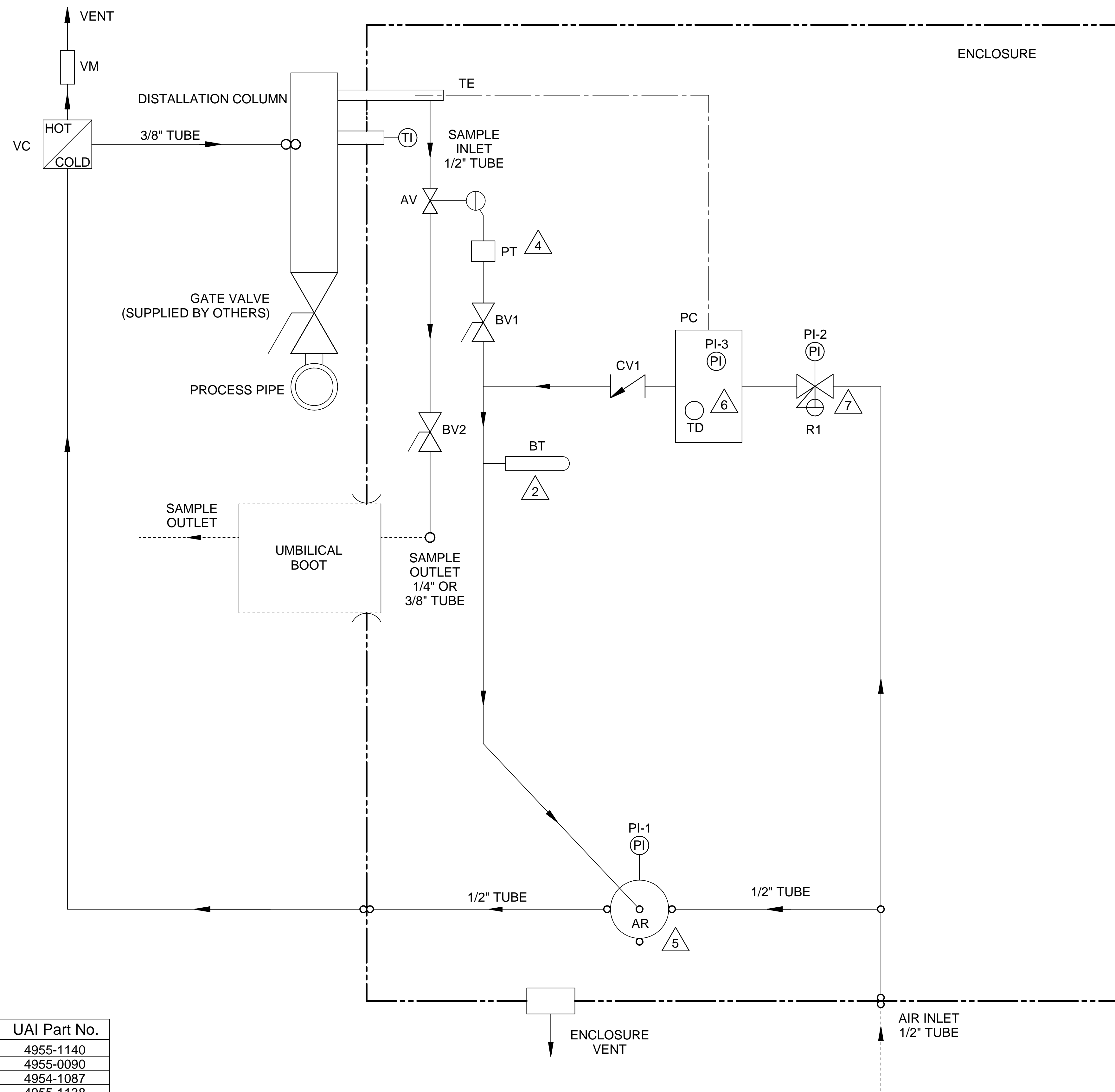
NOTES:

- 1 VORTEX COOLER REQUIRES 35-40 SCFM @ 80-100PSIG. DEWPOINT  $\leq$  -40°F RECOMMENDED. TYPICAL CYCLE IS 20% ON.
- 2 UNIT HEIGHT IS REDUCED TO 48" WITH 2.5" FLANGE OPTION.
- 3 LIFTING WEIGHT: 150LBS. NOTE THAT THE EYELET IS NOT LOCATED DIRECTLY ABOVE CENTER OF GRAVITY.
- 4 HEATED SAMPLE LINE RECOMMENDED @ 140°F MINIMUM.
- 5. SAMPLE FLOW RECOMMENDED 1-4 L/M.
- 6 CUSTOMER I.D. TAG IF SPECIFIED ON PO. GRAVOPOLY SECURED WITH SCREWS OR RIVETS. 1/2" TEXT HEIGHT, WHITE ON BLACK.

5200 Convair Drive Carson City, NV 89706 PH(775)883-2500 FAX (775)883-6388		2	03/24/17	Drawing Updated	TD	BW
 		REV	DATE	DESCRIPTION	DWN/APVD	
DISTILLATION PROBE EXTERIOR VIEW						
PART NO.		FOR		DATE	SCALE	SHEET
1221-PA-V	-	09/08/2015	NTS	SIZE	D	1 OF 3
DRAWN BY		M. Walser		ECO#	DRAWING NO.	
APVD BY		B. Wolf		-	P2781	



 		2	03/24/17	Drawing Updated	TD	BW
<b>PNEUMATIC AUTOMATED CONTROLLER INTERIOR LAYOUT</b>		REV DATE		DESCRIPTION	DWNAPVD	
PART NO. 1221-PA-V		FOR		REVISIONS		
		DATE	SCALE	SIZE	SHEET	
		09/08/2015	NTS	D	2 OF 3	
		DRAWN BY	ECO#	DRAWING NO.		
		M. Walser	-	P2781		
		APVD BY				
		B. Wolf				



**NOTES:**

1. ALL TUBING TO BE 1/4" 316SS (UNLESS OTHERWISE NOTED).

2. BLEED TUBE INSTALLED VERTICALLY WITH ORIFICE ON TOP.

3. ALL WETTED MATERIALS ARE STAINLESS STEEL.

4. SET PNEUMATIC TIMER TO 5 MINUTES.

5. PLUG THE REMAINING OUTPUT ON AIR RELAY W/ PLUG P/N 4951-0023.

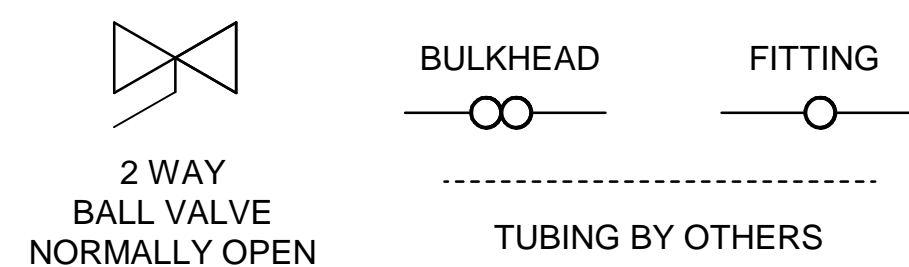
6. SET TEMPERATURE DIAL TO 65°F. SET SENSITIVITY SLIDER APPROXIMATELY 1/8" FROM THE TOP.

7. SET REGULATOR TO 40 PSI.

8. SET VORTEX TUBE 3.5 TURNS FROM BOTTOM.

Item	Qty	Description	UAI Part No.
AV	1	Air Actuated Toggle Valve (NO)	4955-1140
BV1,2	2	Ball Valve, 2 Way, 1/4" Tube	4955-0090
BT	1	Bleed Tube 100 Micron	4954-1087
CV	1	Check Valve - 12psi	4955-1138
PT	1	Pneumatic Timer	8200-1026
AR	1	Air Relay	4955-1139
PC	1	Pneumatic Controller With Integral Pressure Indicator Controller Output	4955-1137
PI-3		Temperature Element	
TE		Temperature Dial	
TD			
R1	1	Pressure Regulator With Integral Pressure Indicator Regulator Output	8200-1027
PI-2	1	Integral Pressure Indicator Regulator Output	
PI-1	1	Pressure Gauge, Relay Output	3019-1019
VC	1	Vortex Cooler 40SCFM	4960-1013
VM	1	Vortex Muffler - HOT	4960-1011
TI	1	Thermometer 12" Stem 316SS	3020-1003

**LEGEND**



			2	03/24/17	Drawing Updated	TD	BW
<b>P&amp;ID</b>		DATE 09/08/2015		SCALE NTS	SIZE D	SHEET 3 OF 3	
PART NO. 1221-PA-V	FOR -	DRAWN BY M. Walser	ECO# -		DRAWING NO. P2781		
		APVD BY B. Wolf					