

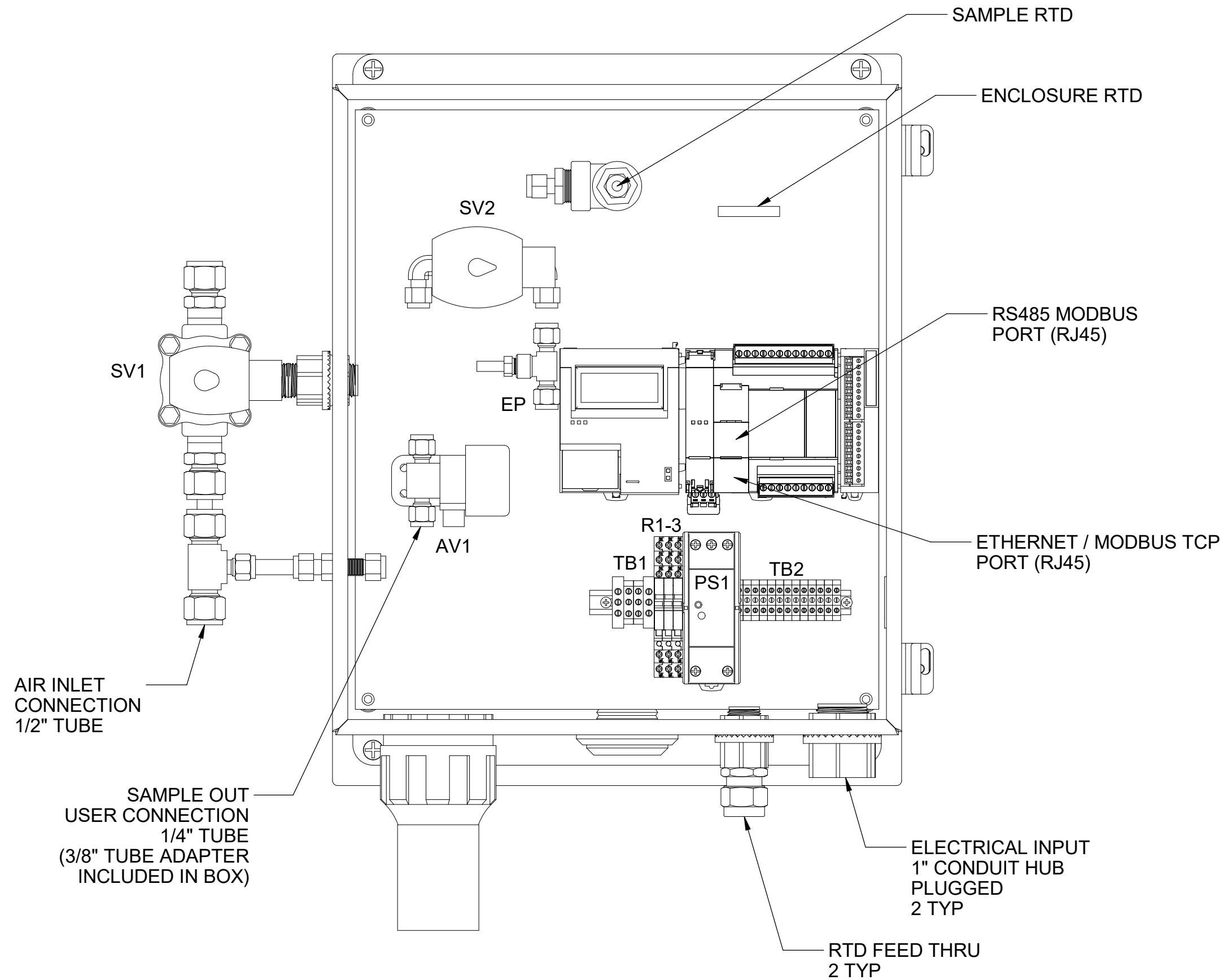




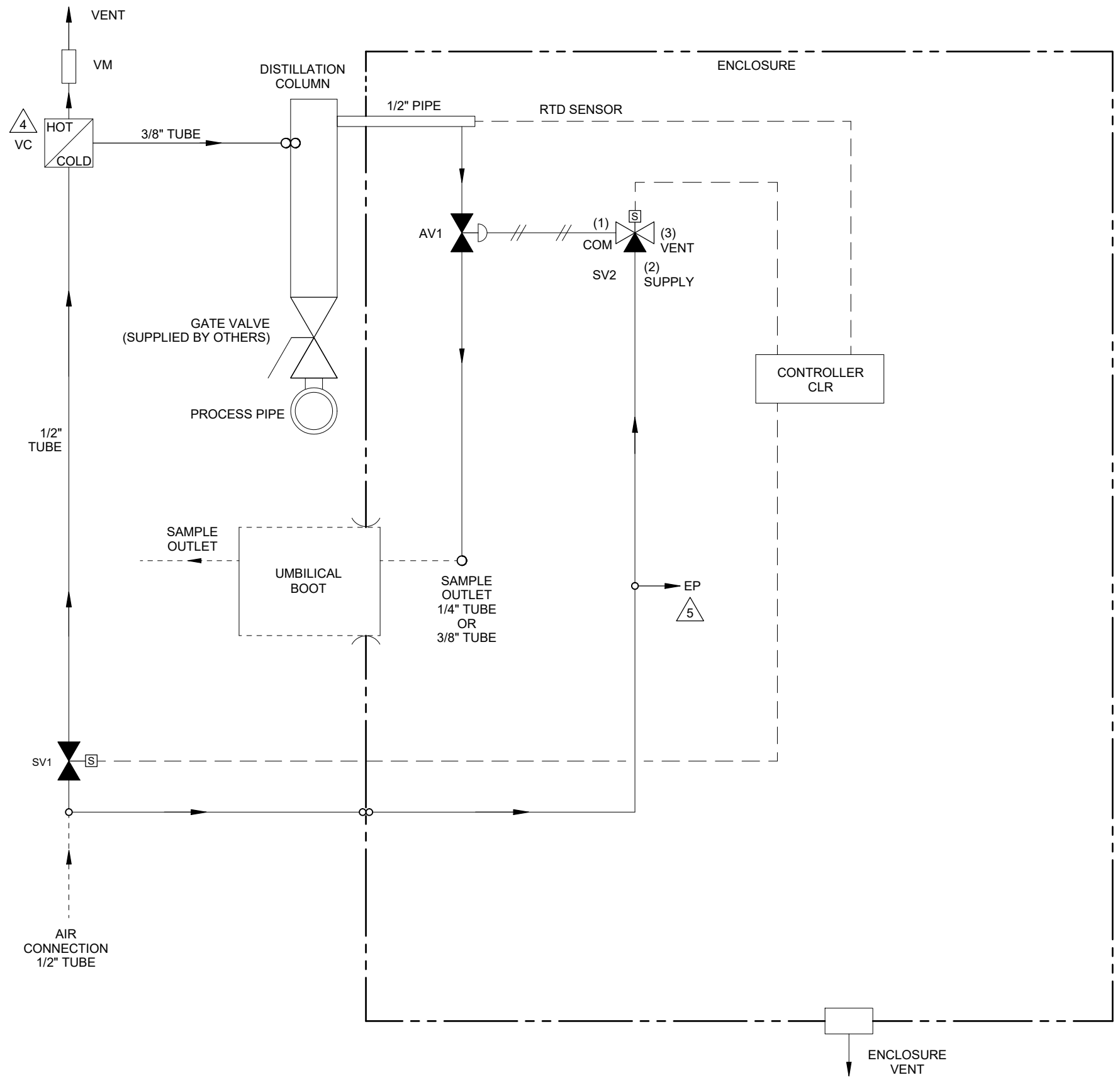
NOTES:

- (1) VORTEX COOLER REQUIRES 35-40 SCFM @ 80-100 PSIG DEWPOINT $\leq -40^{\circ}\text{F}$ RECOMMENDED. TYPICAL CYCLE IS 20% ON.
- (2) UNIT HEIGHT VARIES PER FLANGE OPTIONS, +1", -4"
- (3) LIFTING WEIGHT: 150LBS. NOTE THAT THE EYELET IS NOT LOCATED DIRECTLY ABOVE CENTER OF GRAVITY
- (4) HEATED SAMPLE LINE RECOMMENDED @ 140°F MINIMUM FOR MOST APPLICATIONS.
- (5) SAMPLE FLOW RECOMMENDED 1-4 L/M
- (6) CUSTOMER I.D. TAG IF SPECIFIED ON PO. GRAVOPLY SECURED WITH SCREWS OR RIVETS. 1/2" TEXT HEIGHT, WHITE ON BLACK
- (7) AMBIENT TEMPERATURE OPERATING RANGE: $+14^{\circ}\text{F}$ (-10°C) TO $+130^{\circ}\text{F}$ ($+55^{\circ}\text{C}$)

5200 Convair Drive Carson City, NV 89706 PH(775)883-2500 FAX (775)883-6388		2	04/12/17	NOTES UPDATED	CS	BW
 		REV DATE	DESCRIPTION		DWN/AVD	
REVISIONS						
DISTILLATION PROBE REMOTE CONTROL, AIR COOLED		DATE	SCALE	SIZE	SHEET	
PART NO.		02/02/2017	NTS	D	1 OF 4	
FOR		DRAWN BY	ECO#	DRAWING NO.		
1221-LC-V		A. FLORES	-	P2787		
		APVD BY				
		B. WOLF				



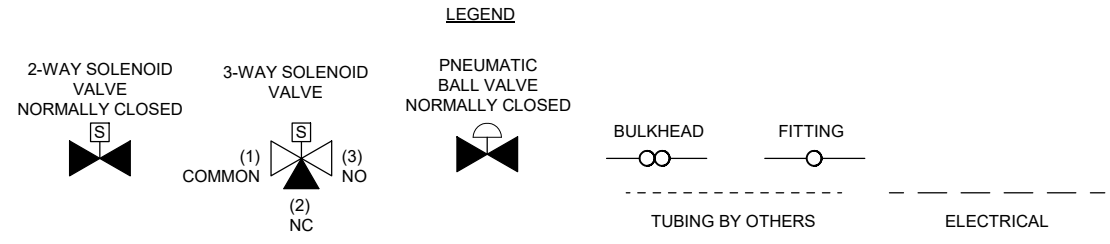
5200 Convair Drive Carson City, NV 89706 PH(775)883-2500 FAX (775)883-6388		2	04/12/17	NOTES UPDATED	CS	BW
 		REV DATE	DESCRIPTION		DWN/APPVD	
REVISIONS						
INTERIOR LAYOUT		DATE	SCALE	SIZE	SHEET	
		01/05/2017	NTS	D	2 OF 4	
PART NO.	FOR	DRAWN BY	ECO#	DRAWING NO.		
1221-LC-V	-	A. FLORES	-	P2787		
		APVD BY				
		B. WOLF				



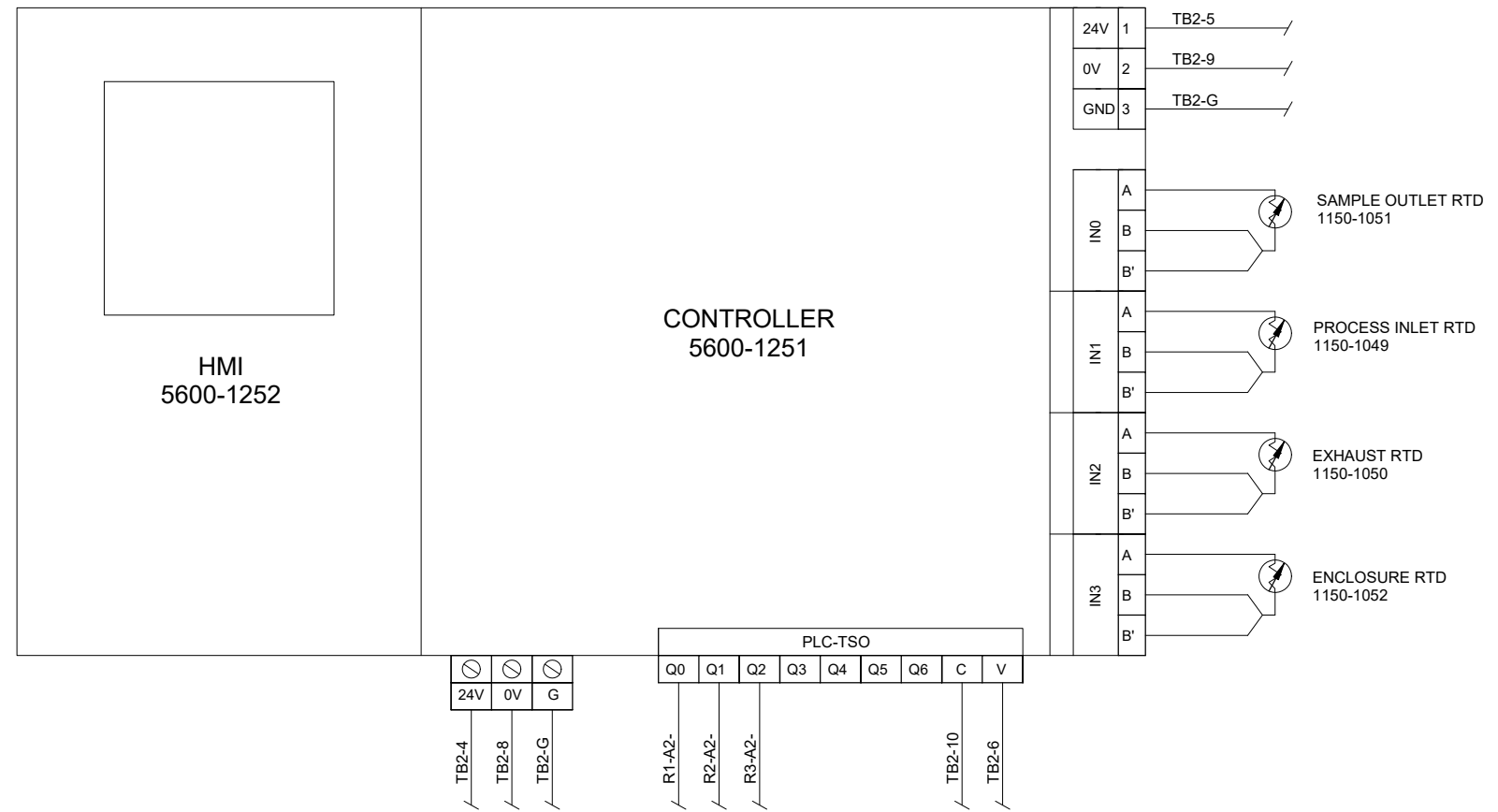
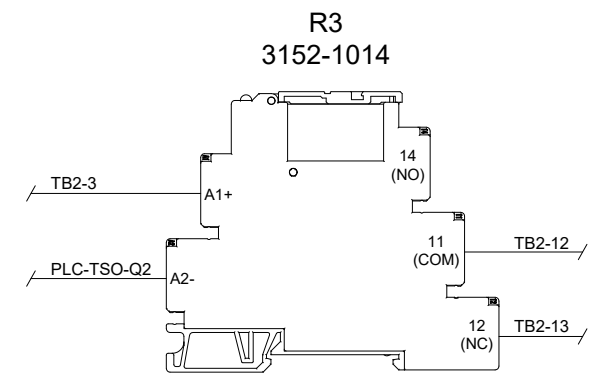
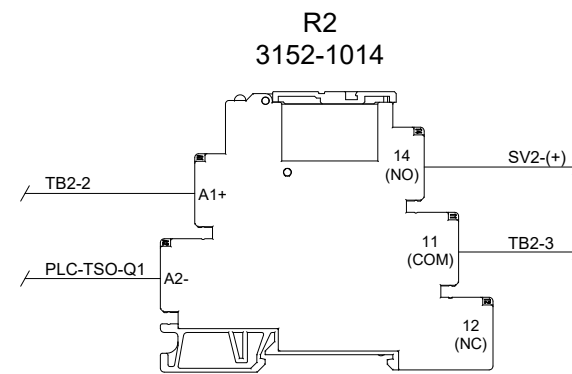
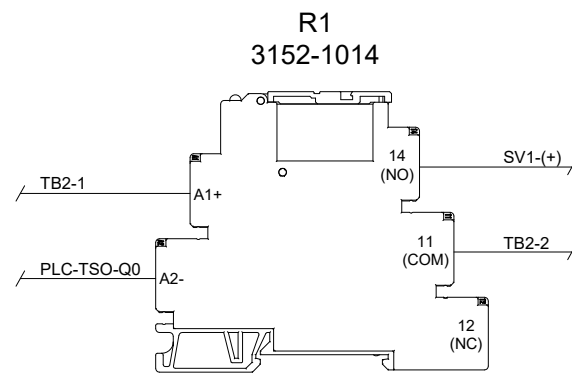
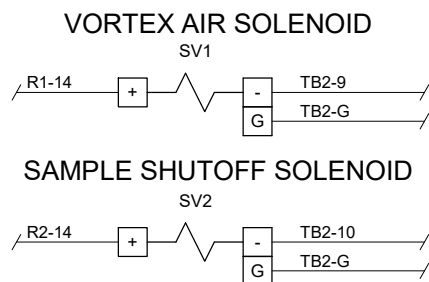
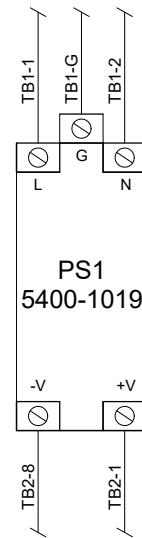
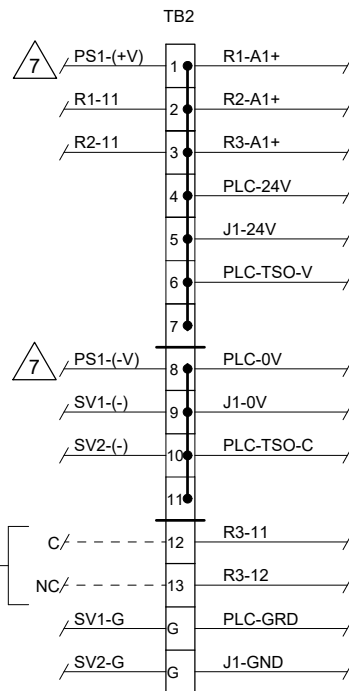
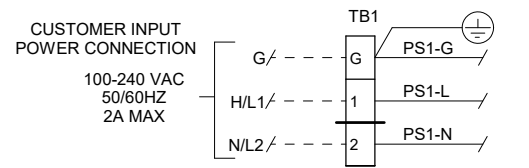
- NOTES:
1. ALL TUBING TO BE 1/4" 316SS (UNLESS OTHERWISE NOTED)
 2. ALL WETTED MATERIALS ARE STAINLESS STEEL
 3. SAMPLE TEMPERATURE SETPOINT IN REMOTE CONTROLLER (NOT SHOWN) IS 65°F UNLESS OTHERWISE STATED ON P.O.

- △4 SET VORTEX TUBE 3.5 TURNS FROM BOTTOM.
- △5 ENCLOSURE PURGE FITTING (<1 L/M)

ITEM	QTY	DESCRIPTION	UAI PART NO.
AV1	1	AIR ACTUATED VALVE 1/4" N.C. SPRING RETURN	4955-0109
SV2	1	SOLENOID VALVE 3-WAY 24VDC EXP. PROOF	4955-0260
EP	1	1/4" TUBE W/ SNUBBER, 2µm	4954-0177
SV1	1	SOLENOID VALVE 2-WAY 24VDC EXP. PROOF	4955-1141
VC	1	VORTEX COOLER 40 SCFM	4960-1013
VM	1	VORTEX MUFFLER - HOT	4960-1011
CLR	1	CONTROLLER	IDEC FC6A



5200 Convoir Drive Carson City, NV 89706 PH(775)883-2500 FAX (775)883-6388		2	04/12/17	NOTES UPDATED	CS	BW
UNIVERSAL ANALYTICALS INC. AMETEK		REV DATE		DESCRIPTION	DWN/AVD	
P & ID		DATE		SCALE	SIZE	SHEET
PART NO.		01/05/2017		NTS	D	3 OF 4
FOR		DRAWN BY A. FLORES		ECO#	DRAWING NO.	
1221-LC-V		APVD BY B. WOLF		-	P2787	



NOTES:

- ELECTRICAL CLASSIFICATION DESIGNED FOR CLASS 1, DIV2, GROUPS A, B, C, D. ALL ELECTRICAL COMPONENTS ARE SELF-CERTIFIED FOR HAZARDOUS AREA USAGE BY THE RESPECTIVE VENDOR. THIS ASSEMBLY HAS NOT BEEN CERTIFIED.
- WIRING SHALL BE IN ACCORDANCE WITH APPLICABLE NEC CODE. ELECTRICAL MATERIALS SHALL BE LABELED BY: UL, FM OR CSA (WIRE AND TERMINALS ONLY) THE FOLLOWING WIRE SIZES ARE EXCLUSIVE OF INTEGRATED COMPONENT WIRE SIZE: ALL WIRES: TFE 300V INSULATION, 18 AWG MINIMUM, STRANDED COPPER CONDUCTOR
- COLOR CODING:

<u>AC</u>	<u>DC</u>	<u>SIGNAL & ALARM</u>
H/L1 - BLACK	POSITIVE - RED	ALL - YELLOW
N/L2 - WHITE	NEGATIVE - BLUE	
GROUND - GREEN		
- POWER SUPPLY AND RELAYS SHALL BE LOCATED ON TB DIN RAIL
- ENCLOSURE DOOR SHALL BE GROUNDED TO BACK PANEL
- TB1 & TB2 SHALL BE SEGREGATED

7 FOR CUSTOMER SUPPLIED 24 VOLT OPTION, DISCONNECT PS1 AND WIRE DIRECTLY TO TB2-1 (+24V) AND TB2-8 (0V).

FIELD TO WIRE

5200 Convair Drive Carson City, NV 89706 PH(775)883-2500 FAX (775)883-6388		2	04/12/17	NOTES UPDATED	CS	BW
		REV	DATE	DESCRIPTION	DWN/DPVD	
		REVISIONS				
WIRING DIAGRAM		DATE	SCALE	SIZE	SHEET	
		01/05/2017	NTS	D	4 OF 4	
PART NO.	FOR	DRAWN BY	ECO#	DRAWING NO.		
1221-LC-V	-	A. FLORES	-	P2787		
		APVD BY				
		B. WOLF				